

# MIRACLE BLEND - Premium Air Dry Paints



## HOW TO USE OUR PRODUCTS

### WHY MIRACLE BLEND (MB) PAINTS?

**MB** is a revolution in the air dry painting world. It is the most comparable air dry to Genesis (heat set) paint in the world!

Imagine no more harsh chemicals or baking between layers!

**MB** paint will not bead when applied like other air dry paints on the market. It has a slow drying time so you can add either water or our thin medium for a thicker paint.

You can premix our paint in air tight containers to store for another project! Mix your paint ratio's just like Genesis! Our paint formula has a high pigment ratio so a little goes much further.

Genesis users will finally be able to adapt techniques with MB and produce reborn's to the same personal standards.

**MB** will save you time, (**NO BAKING**) or waiting for the kit to cool, enabling you to continue painting once touch dry, keeping the creative flow going so is more time efficient.

**MB** paint will lighten once applied and dry **'JUST LIKE GENESIS'!!**

Painting has never been so easy.

**CREATED BY GENESIS USERS** who could not previously adapt to air dry paint.

### MIRACLE BLEND ARTIST COLOURS\*

#### OUR RANGE

We stock 21 colours to save you mixing them. However if you prefer to mix your own, we have the primary colours.

#### WATER : PAINT MIX RATIO

**Perfect wash mix** - 20 parts water to 1 part paint. Pounce with cosmetic wedge and use a large mop brush for creases and hard to reach places.

*For darker strength MB colours such as viridian green and aquamarine blue etc 40 parts water to 1 part paint. For washes 1 part paint to 20 parts for mottle. Pouncing necessary.*

**Perfect mottle mix** - 10 parts water to 1 part paint. Pounce with dry wedge to blend.

**Intense mottle mix** - 5 part water to 1 part paint. Pounce with dry wedge to blend and lighten. *(I've experienced no beading with above mix ratios) if you are following my mix ratios and experience beading, oil residue must still remain on your kit.*

### MIRACLE BLEND FANTASY RANGE\*

#### OUR RANGE

We currently stock 4 colours in our fantasy range, Shimmer, Copper, Silver and Gold. Shimmer. This is an amazing



DIARYLIDE YELLOW



COPPER

product that can be either mixed with any colour to create a shimmery effect or you can pounce it over the top of a colour to add a truly impressive shimmery effect.

#### WATER : PAINT MIX RATIO

As these colours are used for fantasy painting, there really are no rules. You can choose to paint with it without diluting it with water for an opaque effect or add water to make the colours more translucent. Remember, the thicker you add air dry paint the longer it will take to cure.

### MIRACLE BLEND MEDIUMS\*

#### Primer (you can substitute this with Matte sealer)

It is important that there are no oils left on the kit so a good clean with rubbing alcohol is a recommended. Wash your chosen kit well with warm soapy water, use an old tooth brush for small crevices. For best results apply a layer of the Miracle Blend primer prior to neutralizing and painting. *(Please refer to our vinyl kit preparation document).* Primer can make the kit look shiny but any shine will matt down after you have applied a few layers of paint. Coat Primer with a big brush and pounce dry with a cosmetic sponge. This will help the paint to stick and not disappear into the kit.

#### WATER : MEDIUM MIX RATIO

Full strength to 50% water 50% Primer.

#### Skin Booster

We recommend applying a layer of skin booster to your kit prior to doing the final matte sealing coat to bring out the colours and depth in your painted reborn. Skin booster can also be used to create a dewy skin look after applying matte sealer. You can water down this medium to your desired strength.

#### WATER : MEDIUM MIX RATIO

Full strength or 1 part water to 2 parts boost. Use matte sealer after skin boost for a matte end result.

#### Matte Sealer

Matte is used as a final sealer but can also be used to dull down any of our glossier mediums. You can also substitute this medium for primer. This medium can be added to your paint mixes if you find the paint is beading, or if you wish to dull down shine after using primer quickly. *(Please refer to or tips and tricks guide for beading issues).*

#### WATER : MEDIUM MIX RATIO

Full strength or can be diluted with water for less intensity.



PRIMER



SKIN BOOSTER



MATTE SEALER

### Detailing Glaze

Detailing glaze is a low sheen glaze and is perfect for eyelids, nostrils, ear canals, nail beds and lips and should be applied sparingly with a brush and pounced out with a wedge for a lower sheen glazed effect.

#### WATER : PAINT MIX RATIO

Full strength or can be diluted with water for less intensity.

### Thin Medium

Thinning medium is used to extend the drying time as well.

The thin medium is best to use when doing creases and veining.

#### WATER : MEDIUM MIX RATIO

Use as required.

### Correction Fluid

Miracle Blend Correction fluid can be used throughout the painting process when only wanting to remove a minimal amount of paint.

Correction fluid may work on cured paint.

Dab solution on a cotton bud and rub gently on the paint you wish to remove then wipe clean.

This can be used throughout the painting process! *(Please refer to Instruction guide for correction fluid).*

### Dry skin formula

You will need the following items.

- 1) Dry skin formula
- 2) Thin liner brush, that has been worked to look shaggy.
- 3) Tissue or paper towel to dab off excess

I prefer using very small old brushes with nylon bristles (the ones you may usually toss in the bin because they have become shaggy).



Dry Skin Formula was created to add 'Ultra Realism' to your reborn doll.

It gives a realistic natural dry skin look found on newborn babies creases and heels.



DETAILING GLAZE



THIN MEDIUM



CORRECTION FLUID



DRY SKIN

## HOW I USE DRY SKIN FORMULA

For a realistic newborn dry skin effect, Dry skin formula is best applied to heels, ankle creases and wrist creases.

Fundamentals - Can be used over Genesis painted dolls or Air dry painted dolls.

It should only take a few minutes to cure.

Dry skin can be used as a sealer.

Applying several light coats gives you more control over the end result.

Dry skin formula will lighten once dry.



See how the bristles are shaggy on the brush? a smaller brush is even more effective.

I am going to be working on baby's heel and creases above the heel.



Apply Dry skin formula to crease or heel. Once the area has been coated, wipe off excess from your stiff brush so that it is ready to use to create texture.



Here you will see that I have applied it to the heel and ankle crease at the back of baby's foot. After several seconds the dry skin formula will become tacky! This is when you will begin to use your stiff brush in a pouncing action to create texture. This is the fun part! As you pounce the stiff brush try blending edges of the dry skin effect to give it a natural effect.



*Here is baby's foot completed.*

You can add more layers of Dry skin formula for a very dry look or to any part of the crease to show a drier zone.

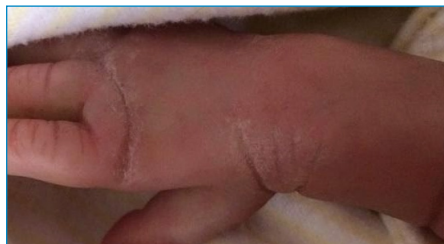
## OTHER AREAS



*Subtle effect, 1 coat.*



*Drier effect, 2 coats. Concentrating more on one area.*



*Here is some more intense work to show you the REALISTIC dry skin look you can achieve. I think baby needs some moisturising :)*

## Thick Medium



How to use Miracle Blend 'THICK MEDIUM'

You will need the following items.

- 1) Thick Medium
- 2) Matte Sealer
- 3) Cosmetic wedge
- 4) Thin liner brush

Thick medium is to be used to add a 3D element to painted hair



strands. It will dry clear and requires a last coat of Matte Sealer if a matte effect is desired.



## HOW I USE THICK MEDIUM

Fundamentals - It should only take a few minutes to cure.

Thick Medium can be used as a sealer.

The thicker the application of thick medium the longer it may take to cure.



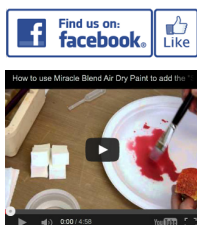
You can paint the thick medium over particular strands you wish to highlight. Our Thick medium is a advantageous consistency giving you more control over which areas you wish to add a 3D effect.



Once thick medium has cured you may wish for a matte finish.

Add a drop of matte sealer to a 'new' dry cosmetic wedge and pounce gently over the thick medium to create a matte finish.

**\* PLEASE NOTE: (Air dry paint can take up to 72 hours to fully cure) It will depend on your country's climate. If you are unsure how long to wait, 72 hours is the suggested time frame. Do not add mediums or root hair until the paint has fully cured.**



[www.facebook.com/groups/686214481453475/](http://www.facebook.com/groups/686214481453475/)

Click on link above to visit our facebook group  
Share your work with Miracle Blend paint products. You will find an abundance of information shared by our users as well as help to questions.

<http://miracleblend.blogspot.com.au>

Click on link above to visit our blog spot  
for more helpful information including video tutorials

Copyright © 2016 Miracle Blend.

Any unauthorised copying, sharing in part or full will constitute an infringement of copyright, unless prior written consent is given.



**MIRACLE BLEND**  
Premium Air Dry Paints